

WELCOME

To the Eyre Peninsula

**SUBSIDIARY
EXTRAORDINARY**



SARDI

Why stubbles?

- Leaving stubbles intact is considered best practice - maintains soil cover and organic matter and is 'socially acceptable'.
- Growers generally aspire to retain their stubbles where possible.
- However, retaining stubbles can present a range of issues to growers, and in dealing with these issues growers have reverted to removing stubble in some cases.

Why stubbles?

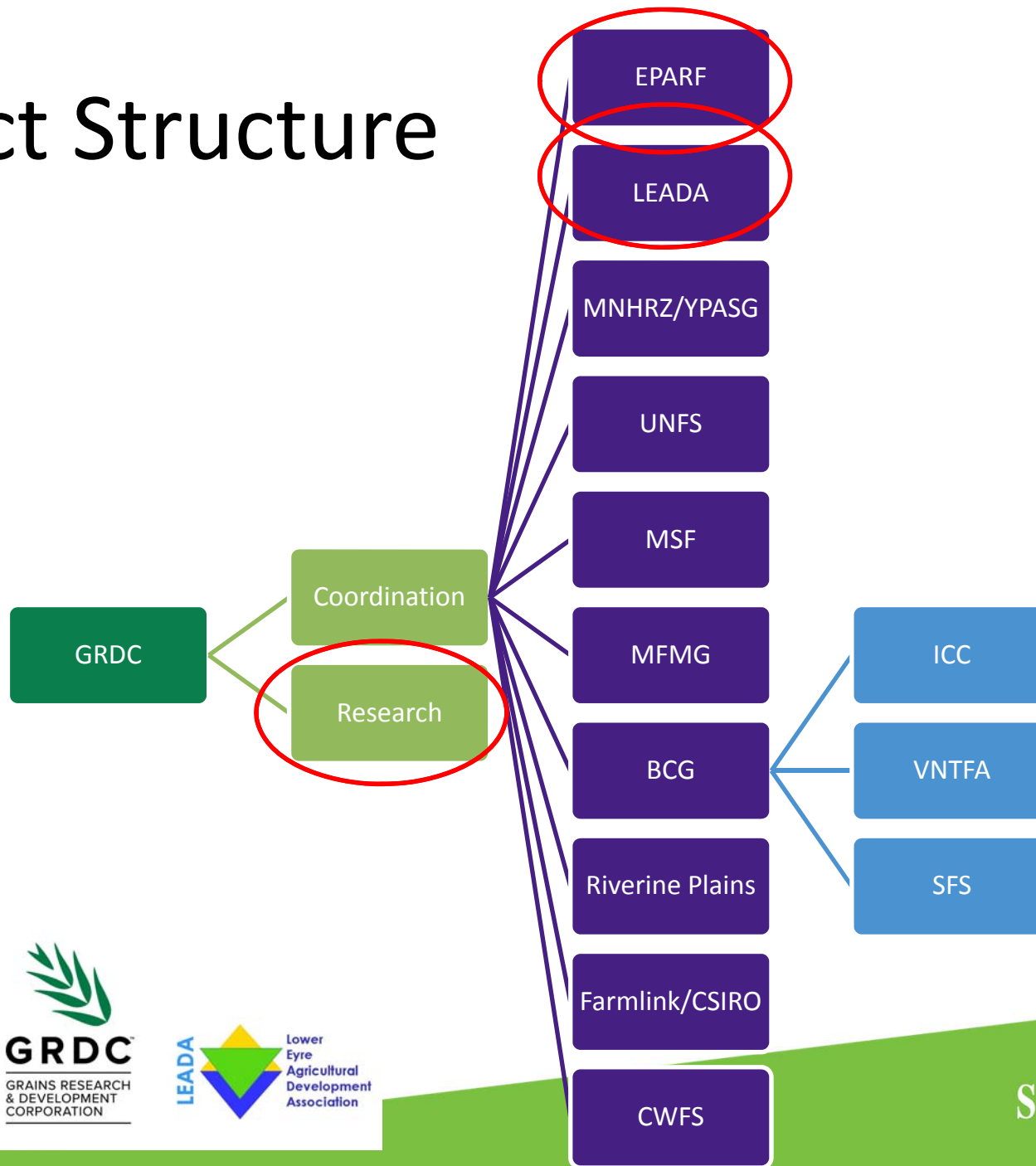
GRDC Investment

- *“Profitability of farming systems with retained stubble is equivalent to (or higher than that) where stubble is removed”*



SARDI

Project Structure



SARDI

CSIRO Research Component

- Research Theme 1 – Understanding **N dynamics** in surface-stubble retained systems, including ^{15}N labelled studies, in-crop N management, supplementary nutrients and stubble incorporation, effects of grazing and N simulation support and improvement.
- Research Theme 2 – A pro-active approach to **grass weed management** in retained stubble
- Research Theme 3 – Monitoring strategies to manage **pests** in retained stubble
- Supporting groups with general trial design, monitoring protocols, analysis of results and modelling potential outcomes of different management practices in different seasons, with various stubble loads.



SARDI

Grower Group Component

EPARF	LEADA
Disease management (Take all, Crown rot, Rhizoctonia and White grain)	Disease management (Yellow leaf spot, Eye spot, White grain (wheat), and Blackleg (canola))
Pest management (snails, mice)	Pest management (snails)
Weed seed management (barley grass, annual rye grass)	Weed management (annual rye grass)
Herbicide efficacy	Herbicide application
Stubble load benchmarks Stubble height decision support Stubble load assessment	Stubble load benchmarks Tools/technologies to manage stubble characteristics during fallow period Monitoring stubbles during fallow
Crop establishment in non-wetting sands	Crop nutrition (nitrogen management)
Role of break crops	

What are we doing here today?

AIM: increase knowledge and awareness of all of us in dealing with barriers to profitable stubble retention to maintain/increase area of stubble retained on EP.

- To provide feedback to researchers/stubble initiative on work so far.
- To determine what is yet to be done/gaps.
- To improve messages produced (guidelines/ articles etc.).



SARDI

Agenda

Time	Who	Topic	Presentation	Discussion
9.30am	Naomi Scholz, SARDI	Welcome, introductions, overview of project and day	10	5
9.45am	Rick Llewellyn, CSIRO	Weeds in stubble retained systems (focus on barley grass, rye grass) p4	20	20
10.25am	Greg Baker, SARDI	Snails in retained stubble systems p12	15	15
10.55am		MORNING TEA	15	
11.10am	Gupta Vadakattu, CSIRO	N cycling in stubble retained systems p12	20	30
12.00pm	Jack Desbiolles, University of SA	Considerations for successful residue handling at seeding (disc and tine seeders) p13	25	5
12.30pm	Andrew Ware, SARDI	Blackleg in canola stubble p22	5	10
12.45pm	Amanda Cook, SARDI Jake Giles, SARDI	Herbicide efficacy in retained stubbles p25,27	5 5	10
1.05pm		LUNCH	55	
2.00pm	Nigel Wilhelm, SARDI	Overcoming water repellence in retained stubble systems p29	5	10
2.15pm	Greg Mutze, PIRSA	Effect of stubble management on mice p39	15	15
2.45pm	Marg Evans, SARDI	Stubble management implications for disease (Crown rot, Eyespot, YLS, Barley net form of net blotch, Take-all) p44	15	15
3.15pm	Jeanette Long	Summary of outcomes/ Evaluation session		30
3.55pm	Naomi Scholz	FINISH	5	



Questions?

Thanks for coming! Enjoy the day!



SARDI