



AIR EP

Ag Innovation & Research
Eyre Peninsula



**2024/25
ANNUAL REPORT**



TABLE OF CONTENTS

ABOUT AIR EP.....	1
CHAIR'S REPORT.....	2
ORGANISATION STRUCTURE.....	6
OUR BOARD.....	7
OUR PEOPLE.....	9
MEMBERSHIP.....	10
ACTIVITY TIMELINE.....	11
2024/25 PROJECT SUMMARY.....	12
2024/25 FINANCE REPORT.....	18
SPONSORS.....	19
RD&E PARTNERS.....	20

About Us

Agricultural Innovation & Research Eyre Peninsula (AIR EP) was officially incorporated on 26 May 2020, with the aim of creating a single entity for farmer driven applied research, local validation and extension of agricultural technologies and innovations on the Eyre Peninsula.

AIR EP is a not-for-profit incorporated association governed by a Board and RD&E activities are driven by members of the Low and Medium Rainfall RD&E Committees and other grower groups across Eyre Peninsula.

AIR EP attracts investment from a range of sources including the Australian and SA Government, Research & Development Corporations, SA Grains Industry Trust plus annual sponsorship and membership fees to facilitate agricultural RD&E activities on Eyre Peninsula.

Vision



A professional, farmer driven organisation that leads RD&E of agricultural technologies and innovations for farmers on the Eyre Peninsula.

Values



- Relevance
- Independence
- Creativity
- Respect
- Collaboration

Our Members

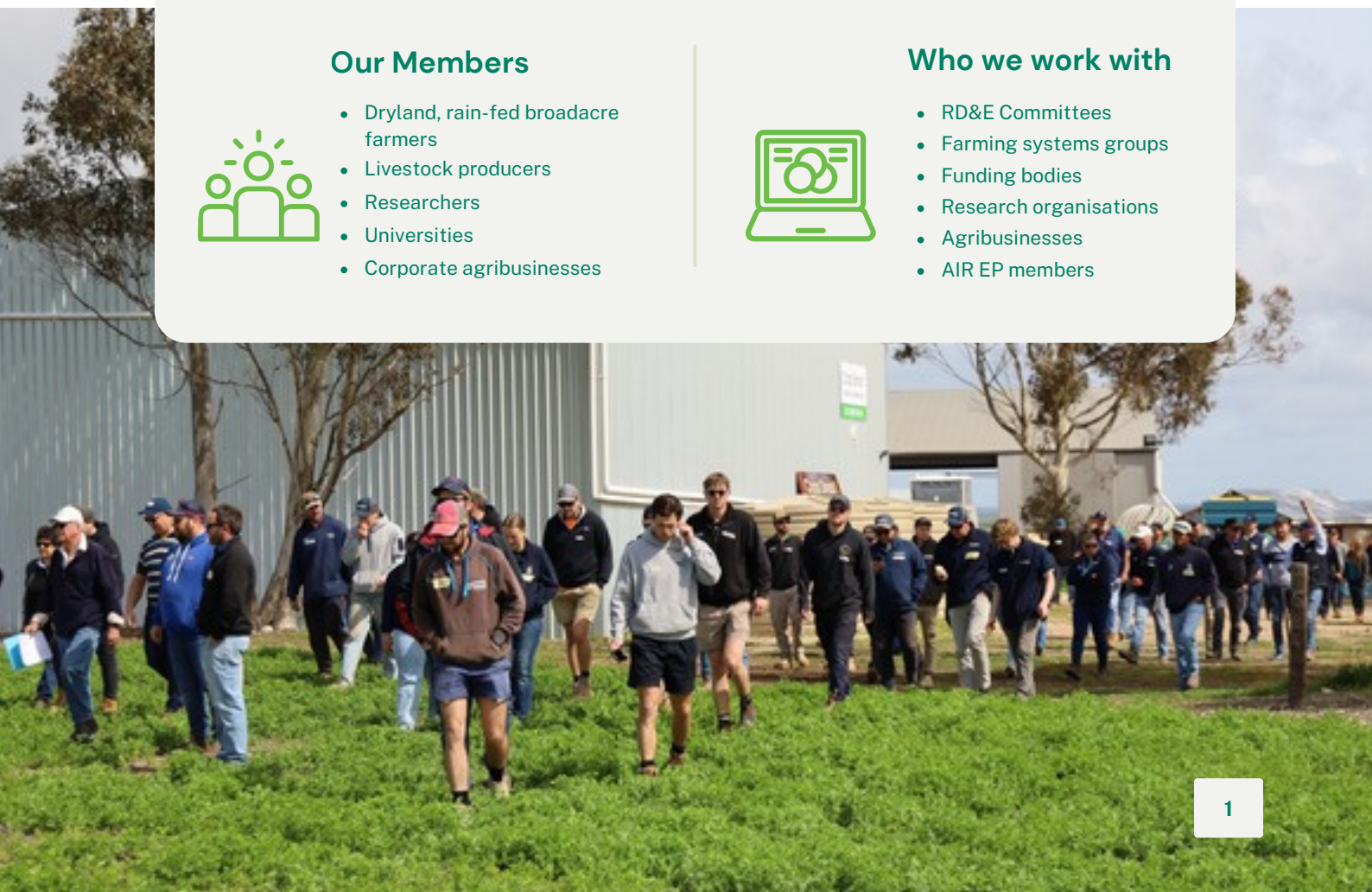


- Dryland, rain-fed broadacre farmers
- Livestock producers
- Researchers
- Universities
- Corporate agribusinesses

Who we work with



- RD&E Committees
- Farming systems groups
- Funding bodies
- Research organisations
- Agribusinesses
- AIR EP members





Chair's Report

It is with pleasure that I present the AIR EP Chairperson's Report for the 2024/25 financial year.

In May of this year, AIR EP celebrated our 5 year anniversary – a major milestone for the organisation. In reflecting on the last 12 months in particular, the year has been one demanding resilience and perseverance for the farming communities across Eyre Peninsula.

The 2024 and 2025 season to date has presented challenges for the majority of farming regions across the State. Following record-low rainfall in most regions, cropping, livestock and native vegetation systems were pushed to their limits due to the devastating lack of moisture. In general, Eyre Peninsula fared better than most with a decile 1-2 rainfall for 2024 and driest start ever for 2025. Many farmers have commented to me that crop yields in 2024 were much higher than anticipated due to conserved soil water from the previous summer.

The extended dry spring, summer and autumn period coupled with a later break to this season has presented a new set of challenges with crop establishment, early growth and feed and water availability for livestock producers being the major concerns.

Local research, development and extension programs are not only helping Eyre Peninsula farmers navigate seasonal variability, but also contributing to longer-term sustainability and profitability across farming systems. We are working on funding for new projects that investigate phosphorus uptake in calcareous soils

In recognition of long-term sustainability being a priority for the agricultural sector, AIR EP strategically partnered with Regional Development Australia Eyre Peninsula (RDAEP) and several other local organisations, to develop the Eyre Peninsula Drought Resilience Plan. The extensive work undertaken in this Plan provides a framework to guide the region in preparing for future droughts, whilst identifying strategies to fund future projects.

Several of the priorities identified during the EP Drought Resilience Plan process align with our EP Ag Vision 2050, developed by AIR EP, SARDI and EP Landscape Board in 2023. In recognition of this 'vision', AIR EP was awarded 2024 PIRSA Grower Group of the Year at the Ag Excellence Alliance Forum. This was a major achievement for the organisation, and we look forward to progressing the 'roadmap to 2050' for farmers and the broader agricultural community on EP.

Research Impact and Innovation

This year, we strengthened our focus on farmer-driven research, collaborating closely with farmers, industry partners, and government agencies to ensure our work remains locally relevant and scientifically robust. Key highlights included:

- Negotiation of the new DAFF Sustainable Agriculture program with the Eyre Peninsula Landscape Board
- Completion of the Soil CRC EP Landholder survey, identifying farmer priorities and opportunities for managing soil health in dry and variable rainfall conditions
- Continuation of legume research, primarily lentils, focusing on refining cropping practices and improving production on challenging soil types
- Identifying and delivering relevant content via the GRDC RiskWi\$e project with the support of independent consultants on EP, utilising focus paddocks and discussion groups to address reduce risk and capitalise on opportunities in farming
- Maintaining positive partnerships with our local research partner organisations, research bodies and universities to explore a variety of relevant research projects, including climate-smart cropping rotations and carbon farming.

The success of these projects lies not only in the data generated but in how that knowledge is being translated into practice – through field days, workshops, trial site visits, and small group extension support.

Extension and Knowledge Sharing

With over 1,300 participants attending events throughout the year, our team has worked tirelessly to ensure that research outcomes are accessible, timely, and practical. Importantly, we've maintained a strong emphasis on farmer-to-farmer learning, supporting peer networks and local champions to share knowledge within and across districts.

We also expanded our engagement with younger, early-career farmers through tailored events, internships, and leadership development opportunities. Investing in people is central to the long-term viability of agriculture in our region, and we are committed to nurturing the next generation of innovators and decision-makers.

The delivery of research and extension events would not be possible without the ongoing support and direction provided by our Low and Medium Rainfall RD&E Committees. I'd like to thank the members on both voluntary Committees, for their time, dedication and commitment they make in guiding research, development and extension priorities for Eyre Peninsula farming systems.

Some of the standout extension and knowledge sharing events during 2024/25 included:

- Soil Nutrition Workshops featuring nutrition expert, Sean Mason in Wirrulla, Wudinna and Lock
- GRDC / SARDI / AIR EP Pulse Field Day at Lock, including visit to Elders legume trial site and the GRDC Hyper Yielding Crops site.
- AIR EP Lower EP Crop Walk at Cummins & Edillilie
- Rudall Young Farmer workshops with soils expert, Dr. Mel Fraser
- GRDC Harvester Clinics at Kimba, Wudinna & Cummins facilitated by farm machinery specialist, Ben White, Kondinin Group.
- Frost Information workshop with Andrew Ware and local advisors at Lock. The workshop was held in response to the widespread frost damage incurred by many farmers in the region, to help work through decision making and opportunities.
- 2025 AIR EP Pre-sowing Member Days in Wirrulla, Kimba and Ungarra
- Saline Soils & VRT Workshops in Kimba, Wudinna and Ceduna featuring Sean Mason and Chris McDonough
- Introduction to Carbon Farming Workshops in Kimba, Cummins, Port Kenny, Ceduna & Port Lincoln



The list of speakers and discussions that took place at each of these gatherings is too exhaustive to list. Importantly, while some events had a high level of attendance and are often rated highly because of a large farmer turnout, it's often the focused discussion that takes place in small group settings that can really make a difference to farm business operations. We will continue to focus on topics and issues that are relevant to the industry and deliver them in a way that farmers get to hear and learn from each other with support from experts and practitioners in the specific area of focus.

Governance and Strategic Direction

The Board has undertaken a comprehensive review of the AIR EP Strategic Plan (2026–2030) to ensure alignment with emerging industry priorities and community needs. Our focus remains on:

- Strengthening partnerships across research, government, and industry
- Securing long-term funding for high-impact, locally relevant work
- Enhancing digital capability and data-driven decision making on-farm
- Enabling a more rapid adoption of technology through science-based extension methodologies

Aligned with the Strategic Plan in the extension space, the board specifically reviewed and updated its Social Media strategy. This is an exciting space for the organisation, with communication forms such as podcasts growing rapidly in popularity. We look forward to growing this communication medium for the benefit of our farming community.

I would like to acknowledge the dedication of our Board members, who bring a wealth of experience and insight to our group. Their commitment ensures that we remain accountable, transparent, financially viable and mission driven.

Looking Ahead

As we look to 2025/26, we are optimistic about the opportunities ahead. Despite climatic and economic uncertainty, we are buoyed by the strength of our partnerships, the innovation of our farmers, and the capability of our team.

On behalf of the Board, I extend my sincere thanks to our staff, collaborators, members, sponsors, and – most importantly – the farmers and landholders who trust us to work on their behalf in pursuit of a more resilient and prosperous agricultural future.

Let's continue to learn together, lead with integrity, and drive meaningful change for our region.



Bill Long

Chairperson

Ag Innovation & Research Eyre Peninsula

August 2025

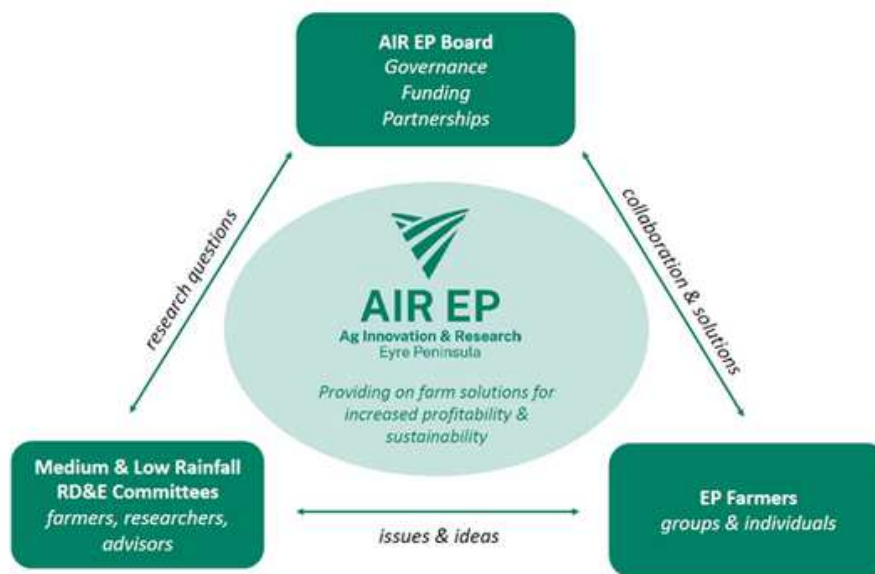


Organisation Structure

The AIR EP Board provides governance oversight and sets the strategic direction for the organisation.

The Board is supported by two RD&E Committees, one with a focus on the medium rainfall zone (Lower EP) and one on the low rainfall zone (Upper EP).

These committees focus on setting priorities for RD&E investment in the region, reviewing projects and providing input into events for farmers.



Medium Rainfall RD&E Committee

(as at 30 June 2025)

Covers lower and parts of Eastern Eyre Peninsula. Members are:

Daniel Adams (Chair & Board member)

Farmer Representatives:

Dustin Parker, Lochie Siegert, Nic Gale,
Mark Modra

Research Representatives:

Jacob Giles, David Davenport, Brett Masters

Agronomy Representatives:

Denis Pedler, Jonathan Forrest, Luke Wilkins,
Daniel Puckridge

Low Rainfall RD&E Committee

(as at 30 June 2025)

Covers central, eastern and western Eyre Peninsula. Members are:

Symon Allen (Chair)

Farmer Representatives:

Matthew Cook (*Board member*), Chris Lymn,
Rhys Tomney, Leigh Scholz, Bruce Heddle,

Research Representatives:

Andrew Ware, Rhiannon Schilling, Amanda Cook

Agronomy Representatives:

Andy Bates, Jake Hull, Kevin Dart, Fabio Arsego

Our Board



Bill Long, Chair (Oct 22-present) Member since 2020

Bill is a farmer and manager of Ag Consulting Co, a South Australian based agricultural consulting business established in 1996. With his wife Jeanette and son Will, he grows lentils, chickpeas, beans, cereals and canola, and runs sheep on his properties at Butler, Tooligie Hill on Eyre Peninsula and Undalya in the mid north of SA. He is passionate about the grains industry and enjoys the complexity and challenges of understanding and managing farming systems across Australia.



Ken Webber, Deputy Chair (2020-present)

Involved with agriculture for 38 years, Ken has a strong desire to see research and development tailored/adapted/developed for the benefit of growers and agriculture in general on the Eyre Peninsula.



Matt Cook, Public Officer & Low Rainfall RD&E Committee

Family farming business at Minnipa (Condada), with wife, Amanda who leads Research at Minnipa Ag Centre, SARDI. Growing wheat, canola, peas, vetch and working towards adding lentils. Graduated from Waite Institute, BaAgSc 1995 and thoroughly enjoyed farming ever since. Matt enjoys being involved in community, on Wudinna Council and farming groups and is passionate about good agricultural research relevant to Upper EP farmers.



Daniel Adams, Medium Rainfall RD&E Committee

Dan farms at Cockaleechee on Lower EP with his wife Lora, growing wheat, canola, lentils and barley. He is a long term user of precision ag technology to help make better decisions on highly variable soil. Dan currently chairs the AIR EP Medium Rainfall RD&E Committee, and was previously involved in LEADA for many years.



Mark Stanley, Special Skills Member (2020 - present)

Mark has spent more than 30 years progressing South Australia's grains industry. He runs a project management business based in Port Lincoln that operates throughout the Eyre Peninsula and beyond.



Greg Arthur, Legal Expertise (2020-present)

Greg was a Partner at Mellor Olsson Lawyers since 1992 when it was first formed, and has been a key member in their business advisory and agribusiness teams. Greg has practiced in the areas of taxation, revenue and property law, and assists clients with their estate planning and asset protection needs. He has acted for a number of farming families during their succession planning process and family disputes.



Mary Rowe, Livestock Expertise (2024-present)

Together with husband Brad, Mary owns a first-generation wool and lamb enterprise at Elliston. Focus is placed on production traits which will allow the business to meet its financial, environmental and welfare objectives. Mary also works full-time in livestock production pharmaceuticals with a special interest in minimising disease and increasing production.

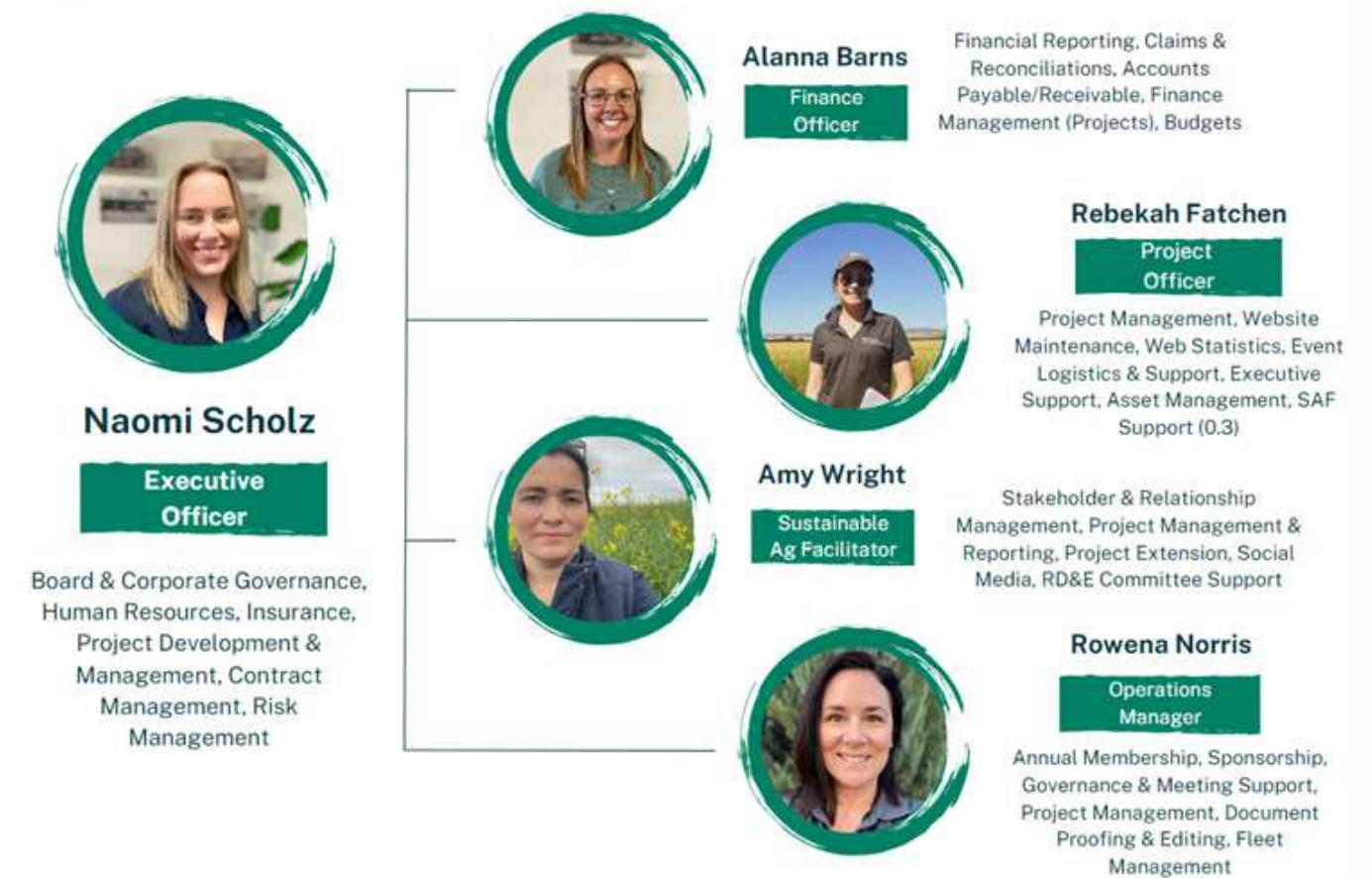


Denis Pedler, Agronomy (2024-present)

Denis is a broad acre and pasture agronomist with 25 years of field experience on the lower Eyre Peninsula, currently the senior agronomist at Carrs Seeds in Cummins. His farming background includes experience on local broad acre mixed farms, a farm exchange in Montana, US, and with a range of crops from oil seeds to pulses, cereals to improved pastures. Denis has been involved in the AIR EP Medium Rainfall RD&E Committee since 2020.

Our People

We are a small yet dynamic team, working remotely across the Eyre Peninsula. Our collaborative approach and local presence enables us to stay closely connected to the communities we serve, ensuring our work remains responsive, impactful, and aligns with regional needs.



Membership

AIR EP offers three annual membership types, providing options for businesses of differing size and scale. Current categories available:

- Individual: \$150 + GST
- Business: \$200 + GST (up to 10 members)
- Future Farmer: FREE for school and tertiary students

Memberships expire at 12 months and can be renewed via the [‘Become A Member’](#) section on the AIR EP website.

Note: As of 30 September 2023, memberships run from March to March annually.



Individual

\$165 per year (incl. GST)

Free Entry to Member Days and AIR EP events

Subscription to the AIR EP enews



Business

\$220 per year (incl. GST)

Add up to 10 members for your business

Free Entry to Member Days and AIR EP events

Subscription to the AIR EP enews



Future Farmer

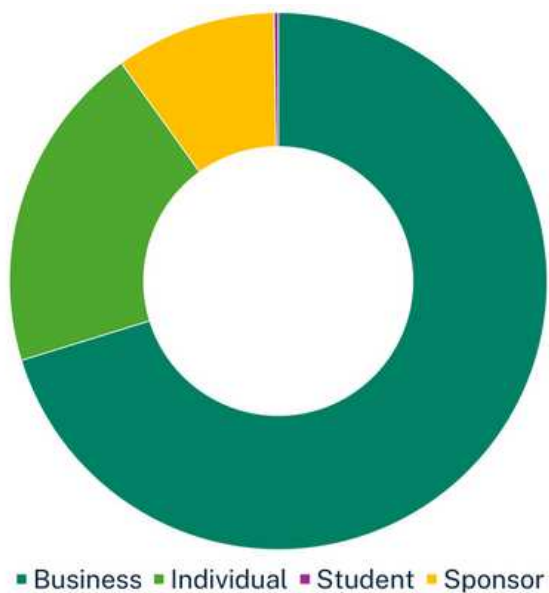
FREE

For university & school student ONLY

Free Entry to Member Days and AIR EP events

Subscription to the AIR EP enews

AIR EP is well supported by a variety of organisations, with over 70% of members made up of farming businesses on the EP. The remaining 30% of membership is comprised of local, interstate and national organisations ranging from researchers, grain exporters and handlers, consultants and advisors, to financial agencies and support agencies.



Student member	1
Individual Members	78
Business Members	120
<i>(up to 10 members per business, calculated as 2.3 per business for reporting)</i>	
Sponsor Members	38
TOTAL 2024/25 MEMBERS	393

Activity Timeline

1 JULY 2024

- Dr Kate Burke: Resilient Client Relationship Workshops (Port Lincoln, Cleve)
- AIR EP Member Days featuring Dr Kate Burke: Working through uncertainty (Cummins, Wudinna)
- Soil Nutrition Workshops featuring Sean Mason (Wirrulla, Wudinna, Lock)
- GRDC Farmer Update (Lock)

AUGUST 2024

- AIR EP awarded “2024 PIRSA Grower Group of the Year” at the Ag Excellence Alliance Forum (Adelaide)
- Young Farmer session (Rudall)
- AIR EP Board Meeting

SEPTEMBER 2024

- GRDC / SARDI / AIR EP Pulse Field Day
- AIR EP Lower EP Crop Walk
- GRDC Harvester Clinics (Kimba, Wudinna, Cummins)
- Frost Information Session (Lock)
- Virtual Fencing Webinar

OCTOBER 2024

- AIR EP Virtual AGM

FEBRUARY 2025

- AIR EP “Pre Sowing” Member Days (Wirrulla, Kimba, Ungarra)
- Carbon Farming 101 Workshop (Wudinna)
- Saline Soils & VRT Workshops (Kimba, Minnipa, Ceduna)

MARCH 2025

- AIR EP Board Meeting
- RiskWi\$e Discussion Groups (Lock, Cootra)
- Franklin Harbour Soil Pit Session
- Introduction to Carbon Farming Workshops (Kimba, Cummins, Port Kenny, Ceduna, Port Lincoln, Wudinna)

26 MAY 2025 - AIR EP celebrates 5 year anniversary

JUNE 2025

- ‘Changemaker’ Workshops (Tumby Bay, Cummins, Streaky Bay, Wudinna)
- Young Farmer Bus Tour (Yorke Peninsula)



2024/25

Project Summary

Project Name	Project Brief	Funding Sources
Development and extension to close the economic yield gap and maximise faming systems benefits from grain legume production in South Australia	Delivery of extension activities at four pulse trial sites located across Eyre Peninsula	GRDC via SARDI
Managing crown rot on upper EP – a joint learning experience	Project activities will build on knowledge gained from prior research on Upper EP using trials and complementary grower-sown demonstrations.	South Australian Grains Industry Trust (SAGIT)
Promoting best-practice feedbase management to deliver improved drought resilience in low to medium rainfall regions	Demonstrate best practice pasture management via on-farm trials & case studies, to deliver enhanced drought resilience. To be achieved using better-adapted pasture species, and implementing best practice technologies in pasture establishment & management.	FDF Soil & Landscape Grant via University of Adelaide
RiskWiŞe: National Risk Management Initiative - Action Research Groups Eyre Peninsula	The National Risk Management Initiative (NRMi) is a GRDC initiative extending over five years that aims to understand and improve risk-reward outcomes for Australian grain growers through Participatory Action Research (PAR).	GRDC
Enterprise choice and sequence strategies that drive sustainable and profitable southern Australian farming systems	By June 2027, at least 80% of growers & advisers in the Southern Grains Region understand the water-limited production potential of their farming systems & the management strategies for new and existing performance frontiers.	GRDC via University of Adelaide
2024 Eyre Peninsula internship in applied grains research	Intern for 2024 hosted by EPAG Research	South Australian Grains Industry Trust (SAGIT) & SA Drought Hub

Effective control of brome grass in the southern and western cropping zones	By May 2027, the economic impact of brome grass will be reduced by 10% across the low rainfall zones, through the implementation of specific integrated weed management strategies.	GRDC via University of Adelaide
De-risking the seeding program. Adoption of key management practices for the success of dry early sown crops	The project will deliver a program that accelerates the adoption of strategic dry & early sown crop management approaches. Grower groups will tailor activities to meet the knowledge, experience, and needs of their member bases and local communities. The project aims to see practice adoption across 2 million hectares of arable land.	FDF Extension & Adoption Program via Ag Ex Alliance
Packaging Soil CRC tools to enhance the extension and adoption of improved soil management practices	This project will support four grower groups to critically evaluate their current extension practices used to engage farmers and to identify which extension tools (developed in Program 1 of the Soil CRC) can be combined to improve the adoption of innovation.	Soil CRC with West Midlands Group
Agricultural Social Benchmarking Surveys – Part 2	Improved understanding of farmers & their practices to better target innovations, communications and contribute to strategic planning.	Soil CRC with Southern Cross University
Building farming systems resilience & future proofing the impacts of drought via the adoption of proven cost-effective & yield responsive soil & fertiliser management practices by farmers across southern Australia	The project focuses on accelerating adoption of proven soil resource management practices offering significant opportunity to build farming systems drought resilience, reduce yield variability, increase sustainability and profitability.	FDF Extension & adoption program via MSF
Improving the climate resilience of the Australian Sheep Flock	Demonstration of practical strategies which improve the fertility of sheep joined during summer including the benefits of using dietary betaine, and establish the impacts on their thermoregulation.	SA Drought Hub via University of Adelaide

23 SA Eyre Peninsula Coordination	Strengthen drought preparedness & drive local action across the region via the coordination of CIP activities & administration	FDF via FRRR Community Impact Program (CIP) Grants
23 SA Young Farmer – Facilitated Peer to Peer Learning	Share innovative ways to build drought resilience, build leadership, networks, and social support for young farmers in the Far West & Cleve area, focusing on individuals aged 18-35 years.	FDF via FRRR Community Impact Program (CIP) Grants
Virtual Fencing for improved climate resilience on South Australian farms	This project will continue the work of initial trials to look at the use of virtual fencing technology in a new field site on the Eyre Peninsula, excluding sheep from erodible areas.	SA Drought Hub via University of Adelaide
Delivery of the Sustainable Agriculture Facilitator (SAF) role	The SAF is a designated central contact point for farmers, landholders, industry, and community groups and will aim to support sustainable agriculture practices in Eyre Peninsula.	Eyre Peninsula Landscape Board (EPLB)
Dr Kate Burke: Resilient Client Relationships Advisor Workshops	2 x advisor/industry support workshops on EP delivered by Dr Kate Burke. For individuals providing advisory/support roles to farmers, to help them look after themselves when their clients are going through tough times.	SA Drought Hub
Silicon: a novel solution to reduce water use and pest damage in wheat	Quantify how silicon fertilisation increases water use efficiency & pest resistance in wheat at the field scale with agronomic practices in place, including farm settings with contrasting agricultural landscapes.	Western Sydney University via ARC grant
Further tactics to minimise frost damage on the Eyre Peninsula	Previous frost work on the EP has been well received & has assisted in filling key agronomic knowledge gaps around frost mitigation in crop, however, it has been identified that further gaps in knowledge exist. This project will build on successful work & engagement already conducted, through a number of mechanisms.	GRDC

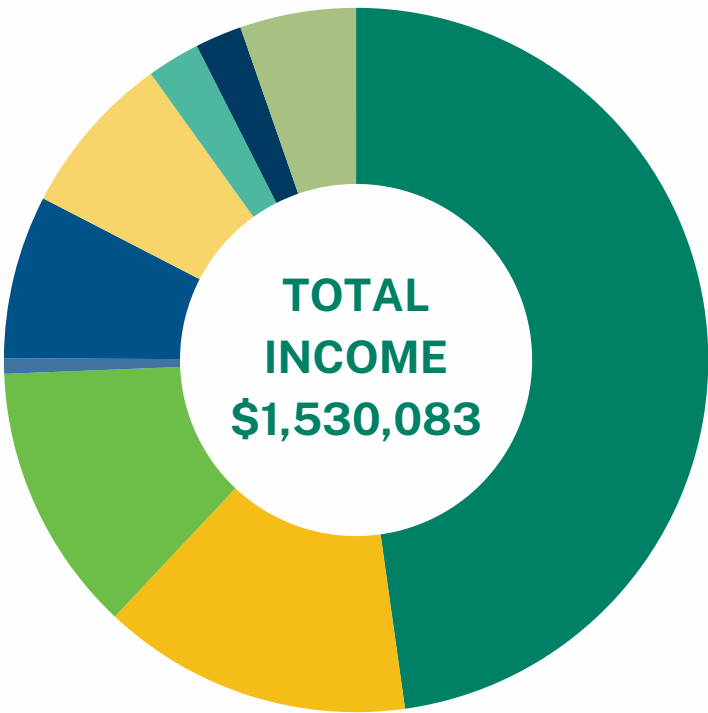
Building resilience - Break Crop Suitability Across Landscapes	Project activities are designed to share information about break crop options & agronomics, looking at crop establishment, soil testing (deep N), in-crop monitoring, yield & economic analysis, ground cover/stubble residues & benefits for the following crop.	SA Drought Hub
Retaining soil water in farming systems using strip & disc machinery (2024)	Project will explore the measurable differences in stripper stubble vs conventional draper stubble sown, using a disc seeding system in lentils (plant growth, increased stored soil water in-season, weeds, pests, disease, yield, soil cover, nutrition).	SA Drought Hub
AgRi-Silience	AgRi-Silience provides funded training in a peer-to-peer setting, helping participants develop or update a Resilience Roadmap or farm business plan. Businesses also receive coaching and one-on-one consulting from experts on specific focus areas.	Livestock SA
Risky decisions and addressing soil constraints on EP	Arming farmers and advisors with tools to assist in decision making that considers risk and reward, through two major extension events on Eyre Peninsula. Extending soils information to improve resilience through improved productivity in constrained areas of paddocks	SA Drought Hub
Hyper Yielding & Profitable Cereals	By September 2027, 30% of wheat & barley growers in the medium & low rainfall zone across the Southern Region, have the information to better understand the risk and reward of employing strategic & tactical crop management decisions for a range of seasonal conditions, to maximise profitability of the cereal phase.	GRDC via CSIRO
Franklin Harbour Ag Bureau Soils Day	Aim to better understand the specific constraints of soils by supporting the Franklin Harbour Ag Bureau in opening three soil pits and conducting extensive soil analysis. The EP Soils Extension Officer will offer expertise at the pits & assist in interpreting local soil test results.	SA Drought Hub

GRDC Harvester Workshops	Delivery of three harvester workshops across Eyre Peninsula. Organise logistics, machinery, communication, catering, evaluation & reporting.	GRDC
Carbon Outreach Project	The project will deliver training & advice to empower EP farmers & land managers to be informed on carbon markets & options for incorporating low emission technologies & practices into farming operations & land management practices. This will be achieved via the appointment of a regionally embedded Carbon Outreach Officer (COO).	Eyre Peninsula Landscape Board (EPLB)
Improving crop phosphorus supply on highly calcareous soils using novel sources	This project will develop integrated solutions to improve the delivery of P in challenging calcareous soils with multiple constraints. Those solutions will be developed in a farming systems context so that practical and profitable management options can be provided to farmers and advisers.	Soil CRC & GRDC
Sustainable Agriculture: Driving growth through innovation and climate responsive practices	This project will improve land managers' ability to make short, medium & long term decisions based off the latest climate information & greatly improved knowledge & local validation of soils & sustainable practices.	Eyre Peninsula Landscape Board (EPLB)
2026 Eyre Peninsula internship in applied grains research	To improve the capacity of grains research, development & extension in the Eyre Peninsula region through the employment of an annual intern within local research organisations in 2026. Hosted by SARDI Minnipa Ag Centre.	South Australian Grains Industry Trust (SAGIT) & SA Drought Hub
Understanding herbicide residue on challenging soil types within the southern region.	To develop a better understanding of the nature & scope of herbicide residue issues, paddock surveys will be conducted in soil types of concern in SA. To determine phyto-toxicity thresholds, glasshouse dose-response bioassays will be conducted for these soil types for two herbicides and two crop types relevant to each region.	GRDC via SARDI

Derisking the sowing program (2025)	Demonstrate practices to reduce herbicide toxicity & increase plant establishment in early sowing. Determine seeding opportunities & plant establishment using dry sowing, compared to sowing at the break on challenging soils? Investigate other measurable benefits to the farming system e.g. biomass production, weed control and yield from early sowing?	SA Drought Hub
Establishing & growing lentils on challenging soil types on the Eyre Peninsula	This investment is designed to address gaps in knowledge of growers regarding agronomic management of lentils on challenging soil types such as sandy, sodic, magnesic or calcareous soils on the Eyre Peninsula. The project will deliver a series of four trials per annum across the Eyre Peninsula and will leverage the RiskWiSe Action Research Group (ARG) for extension of outcomes and feed information into the GRDC/SARDI Lentil check groups.	GRDC NGN
Building resilience-Break Crop Suitability Across Landscapes (Stage 2)	Upper North Farming Systems (UNFS) & AIR EP have worked to bring this common theme across the 3 farming groups and 4 Node regions together into the one project in 2024. It is proposed to continue the project work and establish several paddock scale demonstration sites, tailoring each to the needs of the group region.	SA Drought Hub via Upper North Farming Systems (UNFS)
Weed Management Initiative	Delivery of one herbicide trial on EP from 2025-2029 (5 trial years), evaluating the cost of ARG in lost production sowing wheat with the absence of Paraquat relying on knockdowns prior to seeding.	GRDC via University of Adelaide



2024/25 Finance Report



GRDC	\$731,000
SA Drought Hub	\$217,700
EP Landscape Board	\$189,100
SAGIT	\$10,800
Future Drought Fund (inc. FRRR)	\$114,800
Other Funding Sources	\$115,000
Membership	\$37,300
Sponsorship	\$32,700
Other Income	\$81,500



Project Expenses	\$1,227,500
Employee Costs	\$134,800
Administration Costs	\$42,500
Board Expenses	\$34,800
Communications & Consultancy	\$30,600
Motor Vehicles	\$20,500

Sponsors

GOLD SPONSORS



BRONZE SPONSORS



2025 SUPPORTERS

CPH Accounting
Centre State Exports

*Many thanks to the valuable support from our
2025 Sponsors*

2024/25 RD&E Partners



RiskWi\$e

– the National Risk Management Initiative

GROWER | ADVISOR | EXTENSION GROUPS



RESEARCH PARTNERS



ACTION RESEARCH GROUP LEADS



PRINCIPAL PARTNER



NATIONAL PROJECT LEAD





AIR EP LOVES TO SOCIALISE!



Facebook | @aginnovationep



Instagram | @ag_eyre



X (Twitter) | @AIREP



YouTube | @ag_eyre



AIR EP

Ag Innovation & Research
Eyre Peninsula